

# RIVERHOMES

**Cheyne Walk  
Chelsea SW10**

**£2,500 per week  
Furnished  
SHORT LET**



## Cheyne Walk Chelsea SW10

Situated at prestigious Cheyne Walk Moorings, Viceroy is a beautiful bespoke houseboat which has been thoughtfully converted and finished to the highest standard throughout. Benefiting from direct river views and split over two levels, this stylish floating home comprises Three Double Bedrooms, with master en-suite and family bathroom. The open plan kitchen/living space offers direct access to the spacious deck area. The fully integrated kitchen offers a large range-style oven, induction hob, dishwasher and fridge freezer. There is a separate utility / laundry room which offers additional storage. Further benefits include air conditioning and climate control. The bathrooms have underfloor heating. With all the comforts of a typical home such as mains electricity, water, sewerage and telephone services, all residents of this charming mooring also benefit from a night watchman, CCTV service and an on-site maintenance team. Cheyne Walk is located close to a number of transport options, the green spaces of Battersea park and shopping and leisure amenities at Kings Road and Sloane Square.

### KEY FEATURES

#### Short Let

**Local Authority:** Royal Borough of Kensington and Chelsea

**Internal Area:** 1,301 sq. ft. / 120.89 sq. m.

**Council Tax:** Band F - £2,054.58 for 2023/24

**Beautiful three bedroom houseboat**

**Open plan kitchen/living space**

**Spacious deck area**

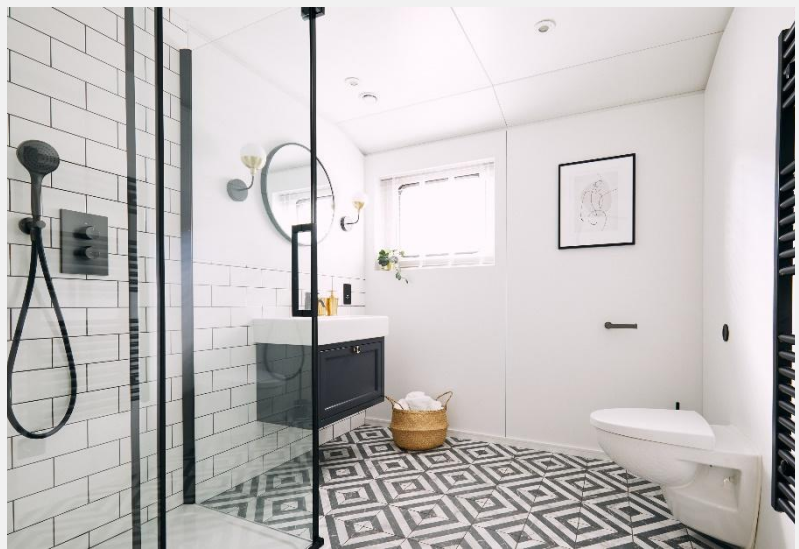
**Night watchman and CCTV service**

**Concierge Service for Parcel delivery**

**Fantastic location**

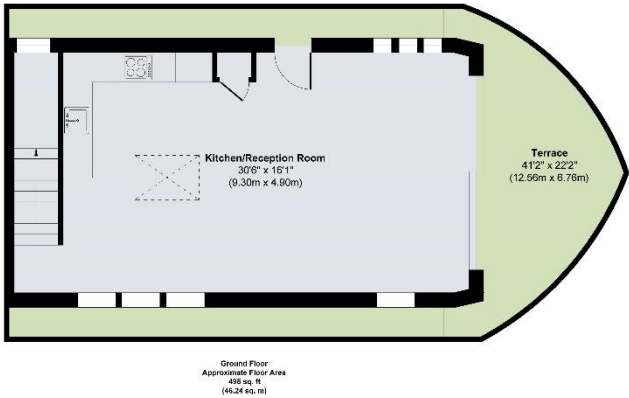






KEY INFORMATION	
Local authority:	Royal Borough of Kensington and Chelsea
Council tax band:	F
Council tax:	£2,621.77 per annum approx.
Internal area:	1,301 sq. ft. / 120.89 sq. m.
Garden area:	Spacious deck area
No. of bedrooms:	3

CHEYNE WALK, CHELSEA SW10



Approx. Gross Internal Floor Area 1301 sq. ft / 120.89 sq. m

Illustration for identification purposes only, measurements are approximate, not to scale.

World Waterside Ltd trading as riverhomes for themselves and its clients give notice that 1: They are not authorised to make or give any representations or warranties in relation to the property either here or elsewhere, either on their own behalf or on behalf of their client or otherwise. 2: These particulars do not form part of any offer or contract and must not be relied upon as statements or representations of fact. Any areas, measurements or distances are approximate. The text, photographs and plans are for guidance only and are not necessarily comprehensive. 3: It should not be assumed that the property has all necessary planning, building regulation or other consents and any services, equipment or facilities have not been tested. 4: Lease details, service charges, ground rent (where applicable) and council tax are given as a guide only and should be checked and confirmed by your Solicitor prior to exchange of contracts. 5: They assume no responsibility and any intending purchasers or tenants must satisfy themselves by inspection or otherwise as to the correctness of each of the statements contained within these particulars. If you require clarification of any points please contact us.